

MITSUBISHI AUXILIARY SETS

THE LONG-TERM SOLUTION FOR YOUR
VESSEL'S POWER NEEDS

- Durable
- Highly reliable
- Compact in size
- Easy access points
- Balanced emission



Mitsubishi Auxiliary Sets, designed and built to last

We offer highly reliable marine generator sets and cogeneration energy packages.

Perfectly engineered and reliable Mitsubishi Diesel Engines, integrated with Europe's best alternators and monitoring systems, offer you the best longterm solution for your vessel's power needs. Each generator set is assembled at our own factory in France, adapted to your requirements, fully tested and ready for installation onboard. Its efficient and fail-free operation makes the generator set the perfect choice where durability and top performance are a must.

Certifications and balanced emission

Mitsubishi generator sets are IMO Tier II and IMO Tier III certified and they are type approved by the major classification societies. The engines are well balanced and have an excellent performance, thereby meeting the most demanding emission control regulations, contributing to the preservation of our planet and creating savings on fuel consumption.

Low vibration and noise

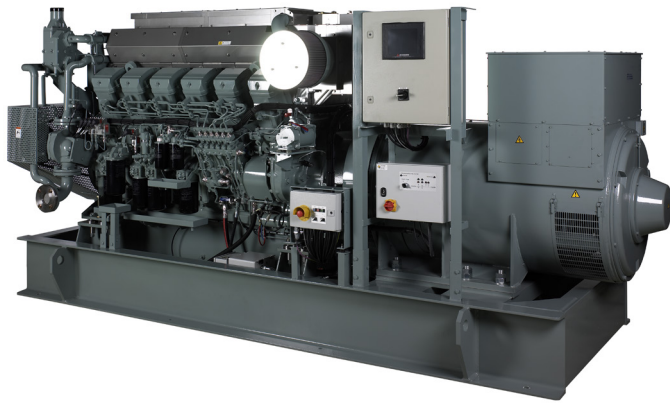
The vibration absorbers in the base frame eliminate noise resonance, high-frequency vibrations and they reduce stress on the foundation.

High load tolerances

Mitsubishi diesel engines have a generous margin by design, enabling them to drive alternators. A hydraulic or electronic governor assures the frequency stability in order to easily meet the international standards.

Alternator

The double bearing AC alternator is self-regulating, drip-proof and brush-less. It has Automatic Voltage Regulator (AVR) for accurate Voltage regulation, a heavy damper cage for parallel operation and very low sub transient reactance values.



Individual cylinders heads, large inspection and maintenance covers on both sides of the engine enable easy access to all main parts. Turbochargers, injection pumps and water pumps have a fully integrated lubricating oil system with changeover lubricating oil filters. Compact in design, the generator set occupies less space in the engine room and its good accessibility makes service and maintenance easy.

technical information

Model	Engine type	Diesel-Electric Propulsion kVA			Auxiliary Generator kVA		
		1200 rpm / 60Hz	1500 rpm / 50Hz	1800 rpm / 60Hz	1200 rpm / 60Hz	1500 rpm / 50Hz	1800 rpm / 60Hz
MAS 650	S6R-MPTAW	-	652	684	-	652	753
MAS 760	S6R2-T2MPTAW	729	-	-	729	-	-
MAS 760	S6R2-T2MPTK	-	765	-	-	765	-
MAS 850	S12A2-MPTAW	-	847	898	-	847	988
MAS 1350	S12R-MPTAW	999	1351	1385	999	1351	1529
MAS 1795	S16R-MPTAW	-	1796	1857	-	1796	2041

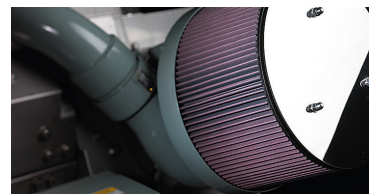
Mitsubishi generator set models:

- Are both IMO Tier II and IMO Tier III certified.
- Are type approved by the major classification societies.
- Combine a Mitsubishi Diesel Engine with a high quality alternator and monitoring system.
- Have double bearing, IP23 louvers and a Voltage of 400 at 50 Hz or 440 at 60 Hz.
- Are designed to connect to a heat exchange or keel cooling system.
- Are mounted on a steel frame with vibration dampers underneath.

Specifications other than the standard specifications mentioned above may be available on request.



Cylinder heads

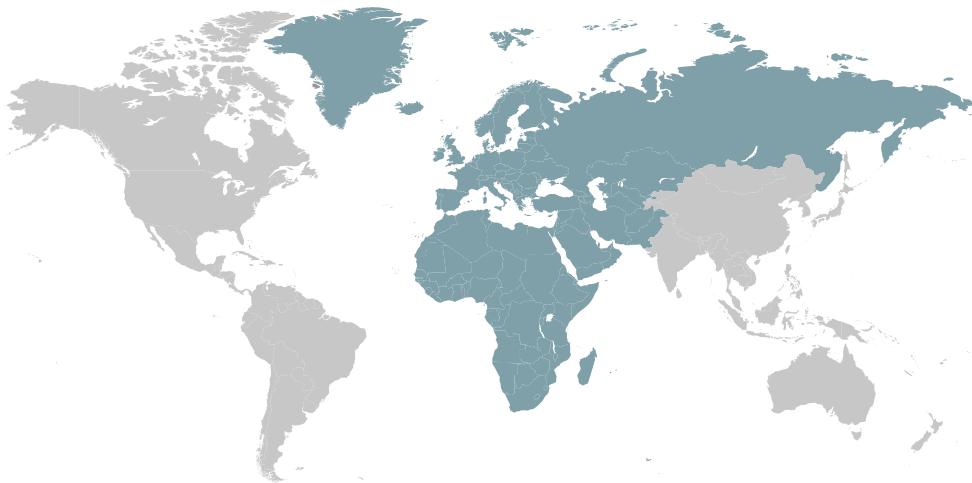


Air filter

This specification may be revised without prior notice. All pictures shown are for illustration purpose only.

Your loyal, reliable partner since 1917

In 1917, Mitsubishi Heavy Industries (MHI) became the first Japanese company to develop and build a diesel engine, and since then has steadfastly pioneered technologies for the reciprocating engine. MHI offers a broad line-up, ranging from construction machinery and marine engines to engines for power generation. In recent years, the company has been involved in the general development of advanced gas turbines, rocket engines, and other types of internal combustion engines, even as it continues to look at the true significance and its decades-long quest to further refine the reciprocating engine.



MITSUBISHI TURBOCHARGER AND ENGINE EUROPE B.V.
Damsluisweg 2,
1332 EC Almere, The Netherlands
Tel: +31-36-538-8311

SPECTRA 

engine-genset.mhi.com | spectra.mhi.com