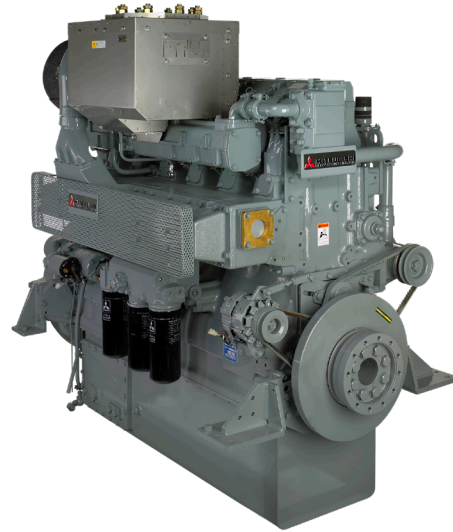


**S6R2-T2MPTK**  
324 - 610 kW | PROPULSION  
IMO TIER II

# MITSUBISHI MARINE ENGINE

RELIABLE MECHANICAL ENGINE



## ENGINE DATA

Engine model	S6R2-T2MPTK
Cylinder configuration	6 in-line
Total displacement	29.96
Bore x stroke (mm)	170 x 220
Flywheel and housing	SAE 18 / SAE 0
Compression ratio	14.0:1
Dry weight (kg)	2960

## Method of operation

4-stroke, water-cooled diesel engine, with direct-injection, turbocharger and air-cooler

## Cooling method

separate high and low temperature cooling circuit; charge air cooler directly cooled by sea water (intercooler)

## RATING<sup>1,2</sup>

Rating	UCD	UCD	UCD	UCD	UCD	HD	MD
Output (kW)	324	380	395	423	480	530	610
Output (bhp)	435	510	530	567	644	711	818
Engine speed (rpm)	1350	1350	1350	1350	1350	1400	1500
Emissions	IMO Tier II						

<sup>1</sup> For rating definitions, please see our website.

<sup>2</sup> Atmospheric condition: barometric pressure: 100kPa, ambient temperature: 298K, relative humidity: 30%.

## STANDARD AND OPTIONAL EQUIPMENT

### STANDARD EQUIPMENT

#### Fuel system

- Flexible fuel supply - and return hoses
- Fuel feed pump
- Fuel fine filters, change-over type
- Fuel injection pump
- Dual walled high-pressure fuel lines
- Fuel injectors

#### Lubricating oil system

- Wet type oil pan with inspection covers
- Oil pressure pump, gear driven
- Lubricating oil filters, change-over type
- By-pass filter
- Oil cooler with thermostat

#### Starting and electrical system

- Electric starter (Earth floated 24V)
- Alternator, 30 Amps.
- Stop solenoid (ETS)

#### Cooling system

- Freshwater pump including piping and thermostat (HT)
- Front pulley PTO standard

#### Air inlet system

- Mitsubishi turbocharger
- Air inlet silencer with pre-cleaner
- Inlet air aftercooler or intercooler
- Inlet manifolds or ducts

#### Exhaust system

- Stainless steel insulation (SOLAS)

#### Other

- Mounting brackets for rigid mounting
- Flywheel and housing, SAE standard
- Torsional vibration damper

#### Fuel system

- Drip tray fuel filters

#### Lubricating oil system

- Lubricating oil drain pump
- Pre-lubrication oil system
- Drip tray oil filters

#### Monitoring system

- Complete digital monitoring system
- Sensor package; sensors mounted on engine with terminal box

#### Cooling system

- Cooling system with fresh water pump, V-belt including piping and thermostat (LT)
- Heat exchanger and seawater pump
- Cooling water heater with circulation pump

### OPTIONAL EQUIPMENT

#### Classification

We are cooperating with many of the major classification societies.

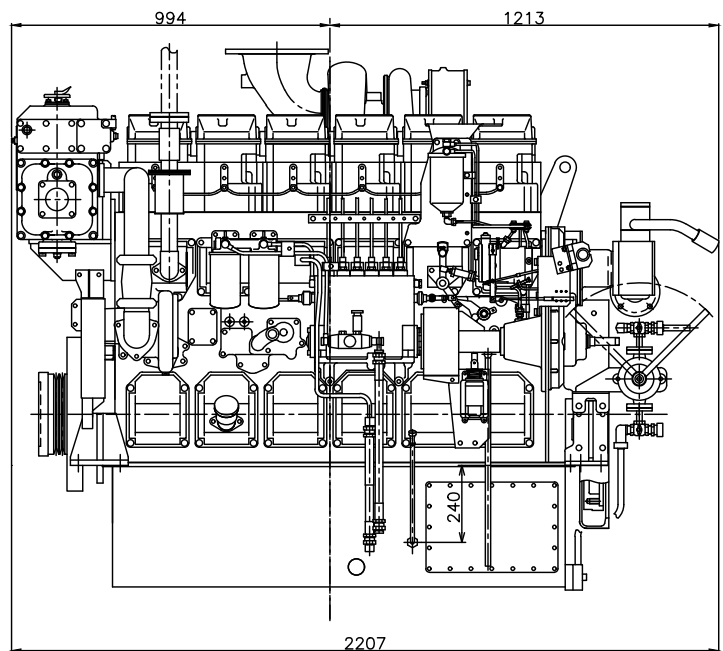
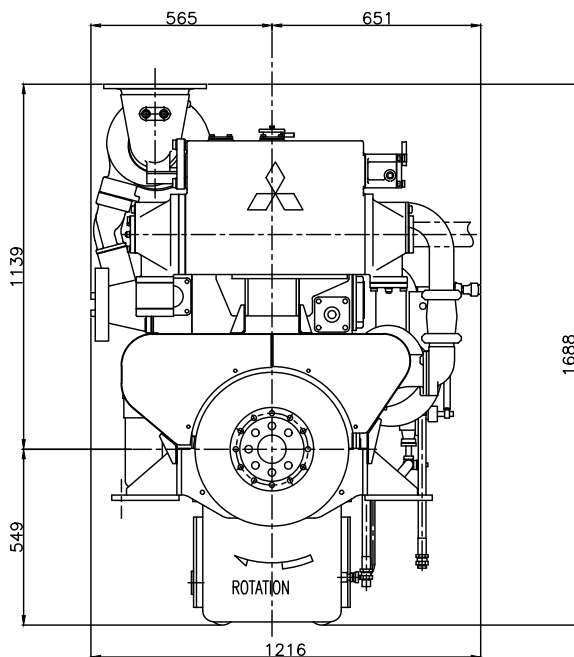
#### Governor (mandatory)

- Hydraulic governor
- Electronic governor (not available for single engine propulsion)

#### Exhaust system

- Flexible expansion joint

## DIMENSIONS



### More information

Contact your local dealer for more information regarding Mitsubishi Marine Engines and optional equipment or, visit [www.mtee.eu](http://www.mtee.eu)

© Mitsubishi Turbocharger and Engine Europe B.V. | This specification may be revised without prior notice. All pictures shown are for illustration purpose only.